

A silhouette of a person walking, composed of many small, dark, rectangular blocks, set against a bright, glowing light source on the right side of the frame. The person is walking towards the right, and the blocks are arranged to form their shape. The light source is a bright, circular glow on the right, creating a strong contrast with the dark background.

Light and Art

Light and Film

Reasons why lighting is need in films:

- 2. Determine the quality

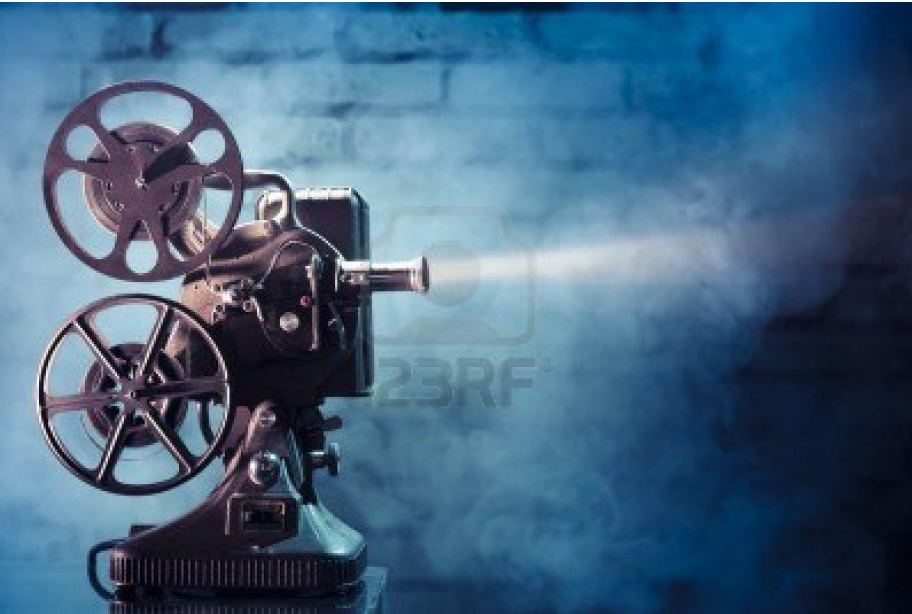
1. Determine the mood



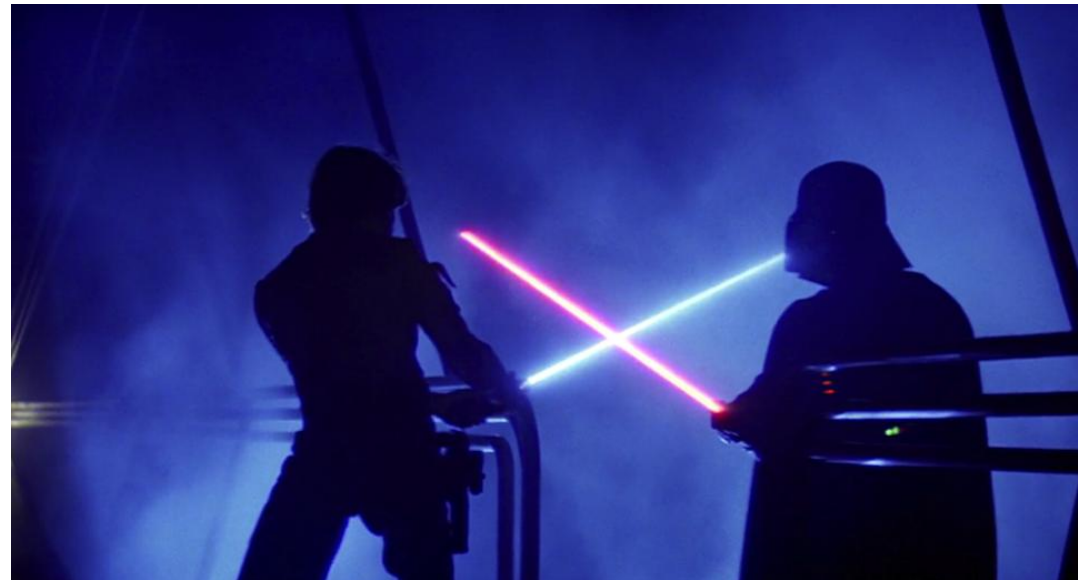
© James Minchin

Light and Film

Lights in cinema



Lights in films:



Light and Film

Stage lighting:



Light and Music

Laser Harp

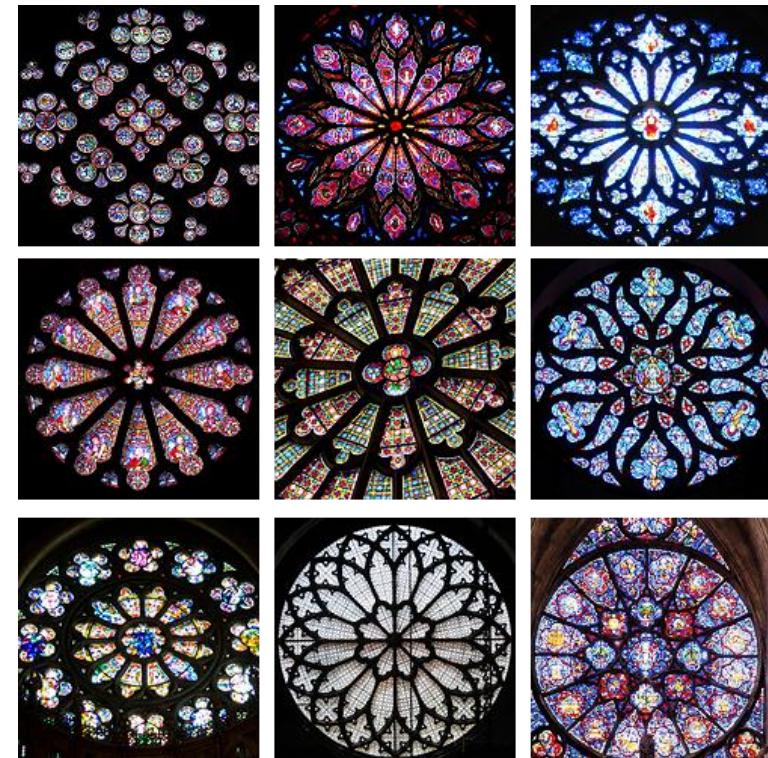


Songs about light:



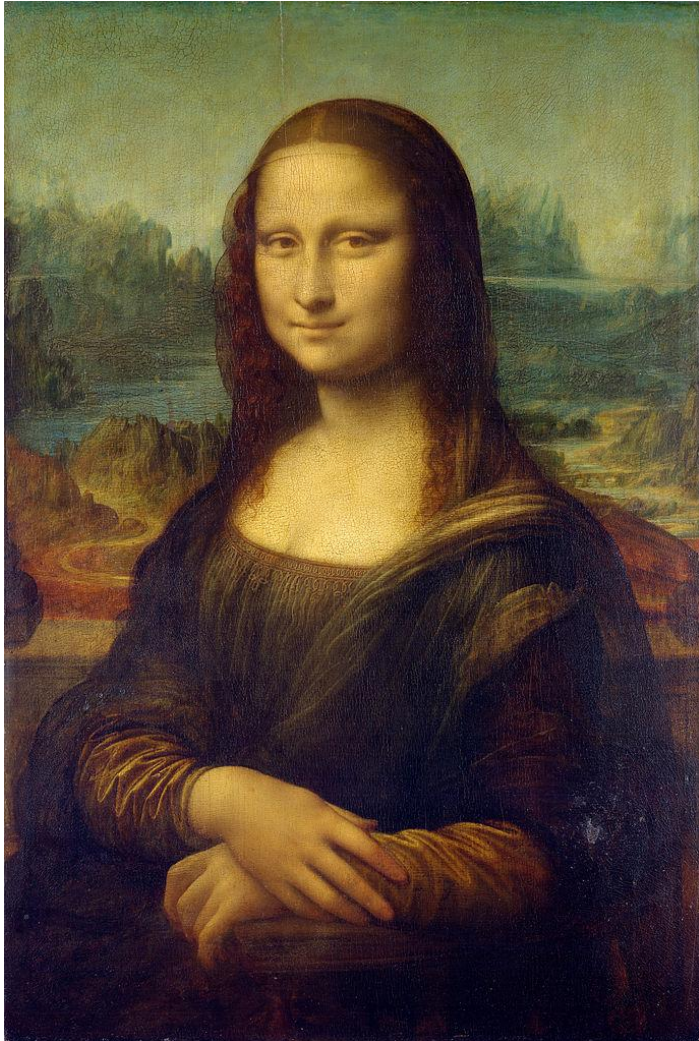


Light and Painting



Light and Painting

Renaissance



Baroque



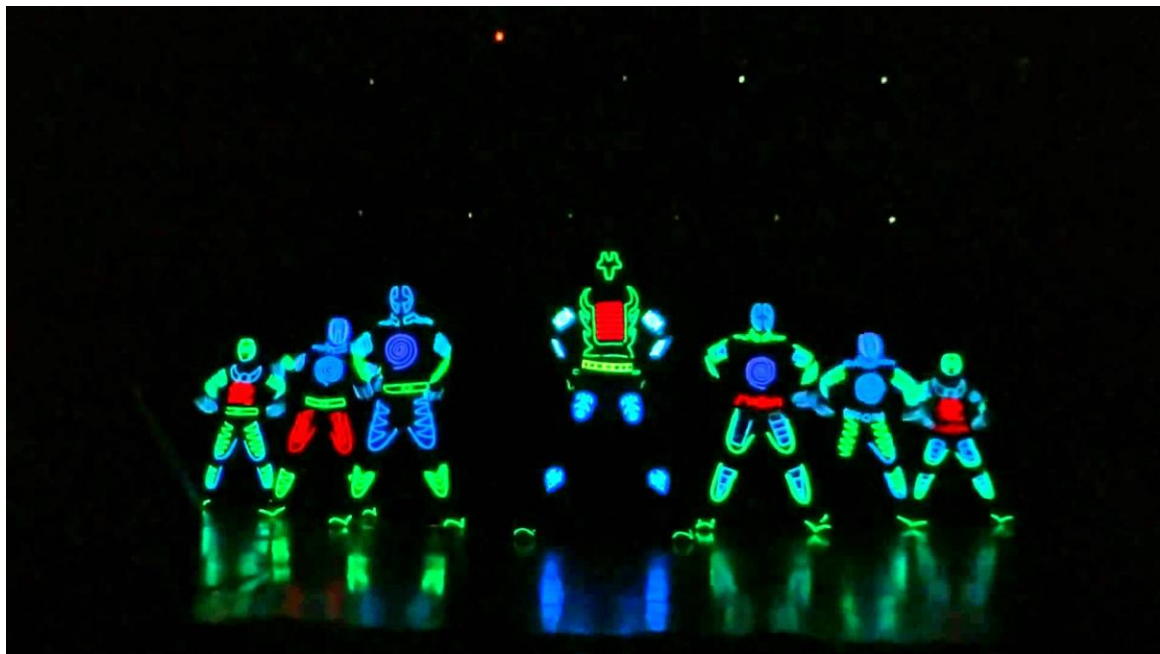
Light and Dance

Shadow dance



Light and Dance

LED dance





Light and Photography



Light and Photography

Highlights

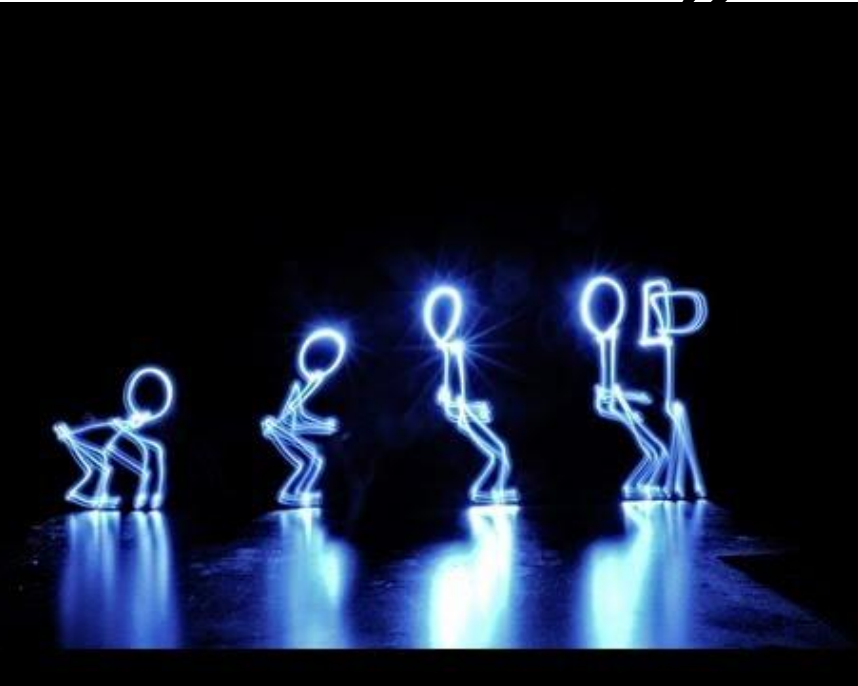


Shadows



Light and Photography

Light painting

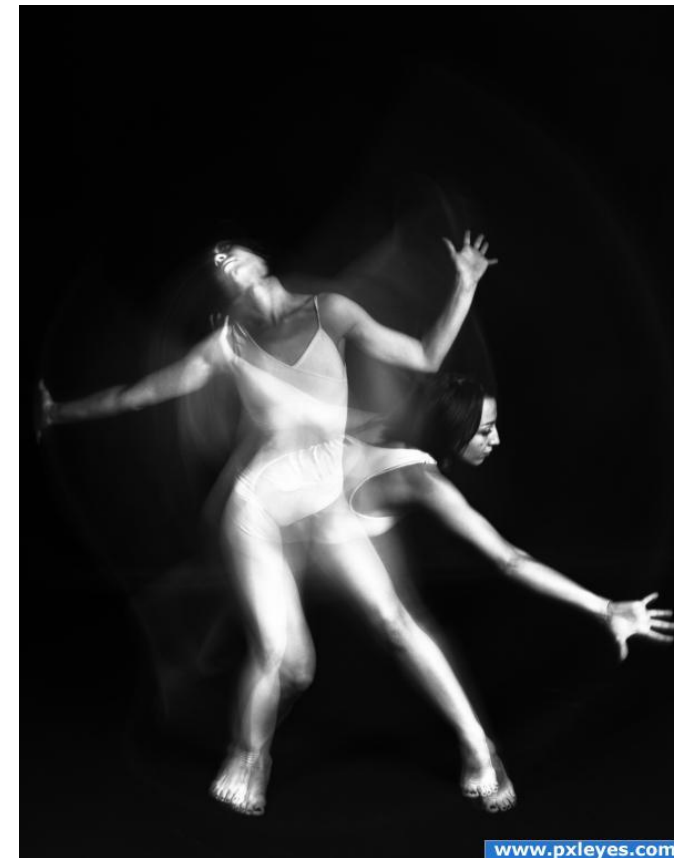


Light and Photography

Flash



Effects



Light and Tourism

Cities



New York



Tokyo

Las Vegas



Light and Tourism

Buildings



Light and Tourism



Nights at
different places



Light and Tourism

Natural lights

Africa



North Pole



Light and Tourism

Fireworks



And

THANKS FOR WATCHING